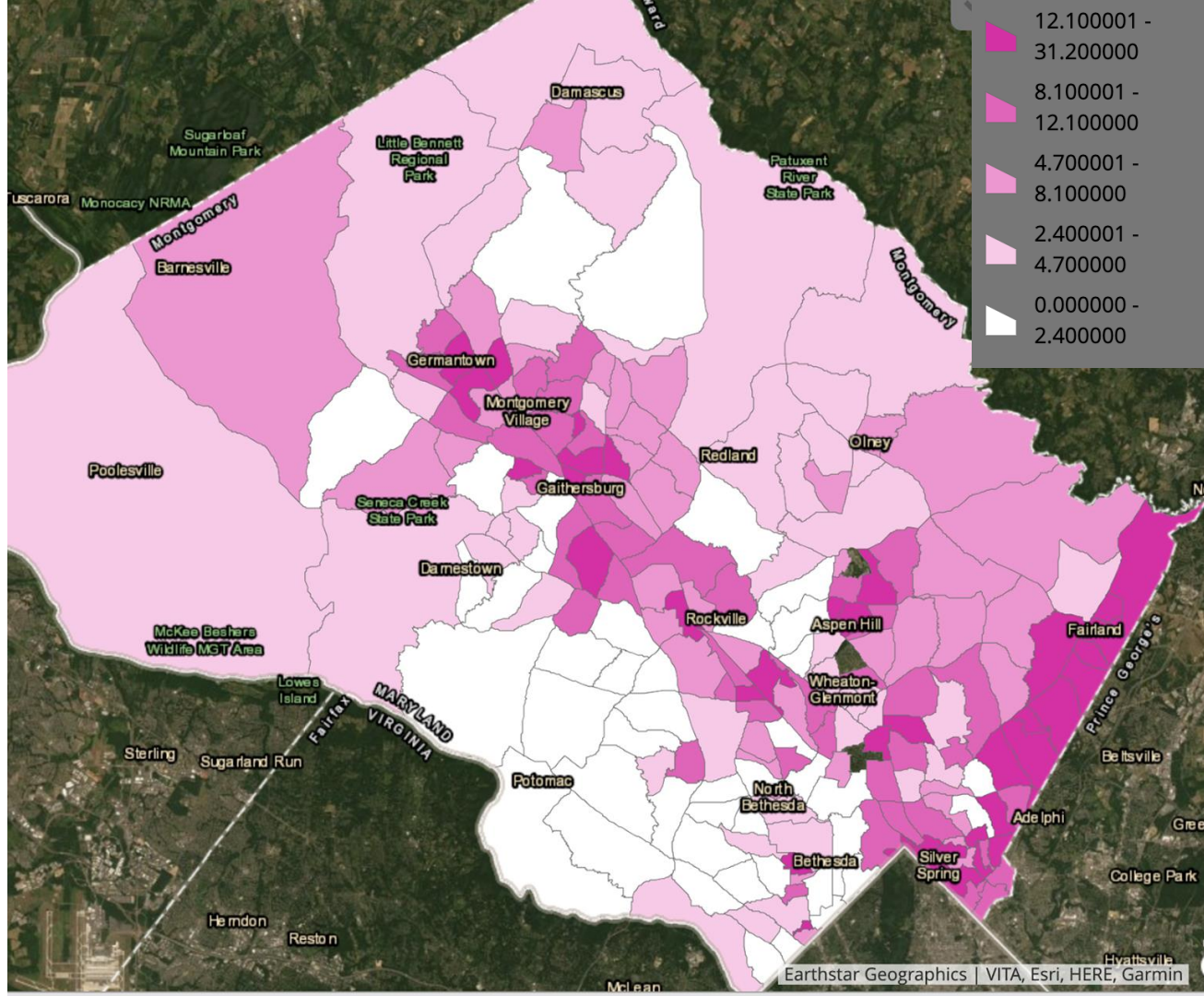




Prince George's County Food Security Task Force
Presentation
February 12, 2021



The Food Security Strategic Plan

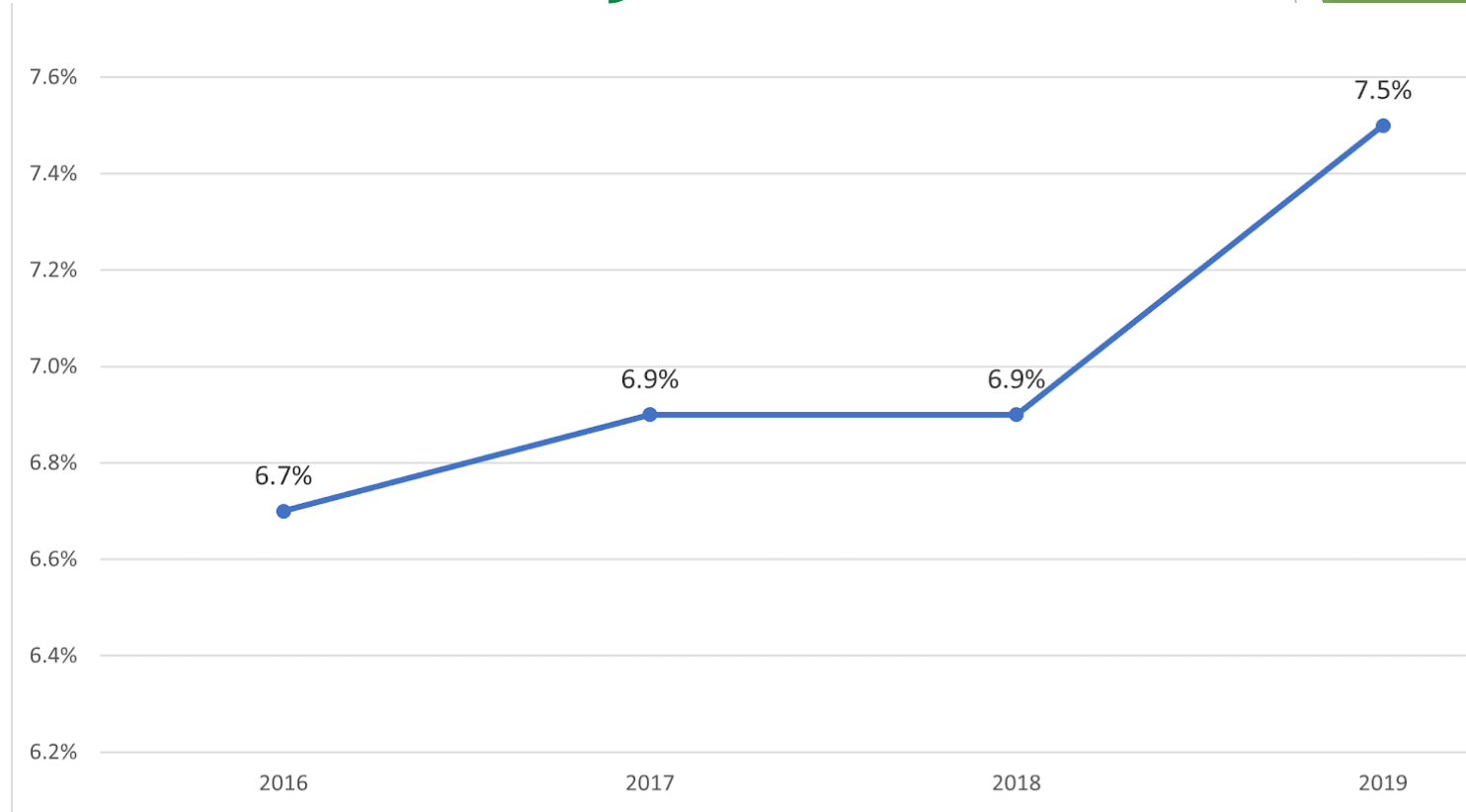


Bill 19-16 passed in July 2016
requiring delivery of Food
Security Plan by December
2016

Plan development - Fall 2016

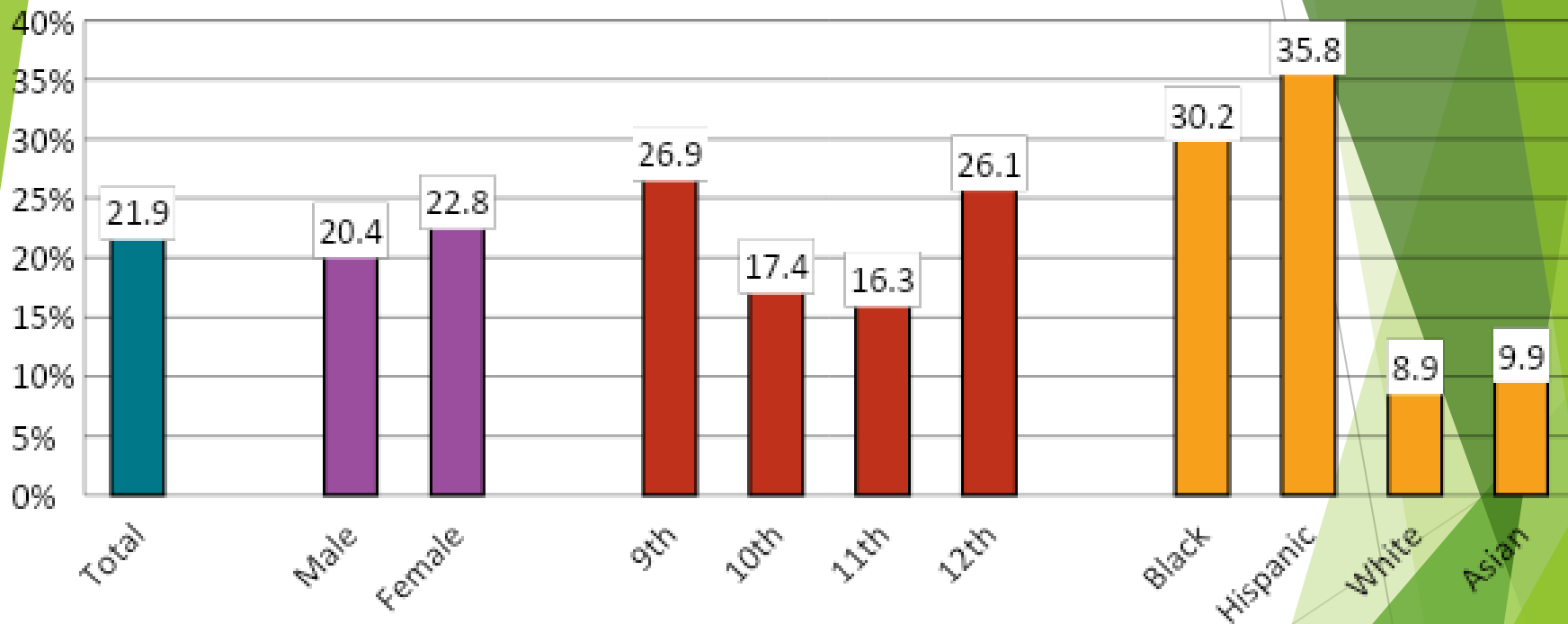
Plan released by the County
Executive in January 2017

Poverty on the Rise



Montgomery County Poverty Rate - 2019 U.S. Census American Community Survey

Student Food Insecurity Disparities



2018 Maryland High School Youth Risk Behavior Survey/Youth Tobacco Survey
(YRBS/YTS), Maryland Department of Health

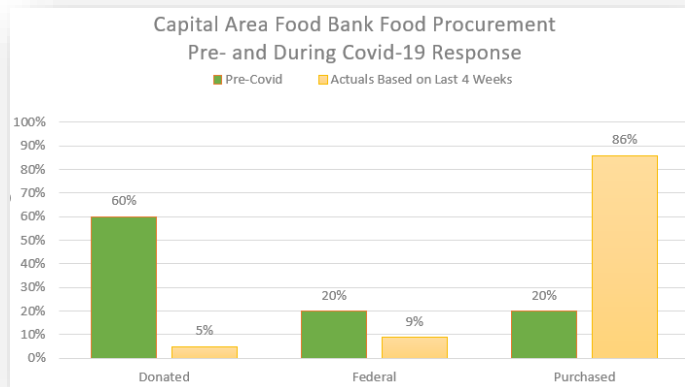
*During the 12 months before the survey

†B > W, H > W (Based on t-test analysis, $p < 0.05$.)

All Hispanic students are included in the Hispanic category. All other races are non-Hispanic.

This graph contains weighted results.

Potential Increased Long-Term Food Insecurity



2020 Projected Food Insecurity Rate

13%

2018 → 2020 Change

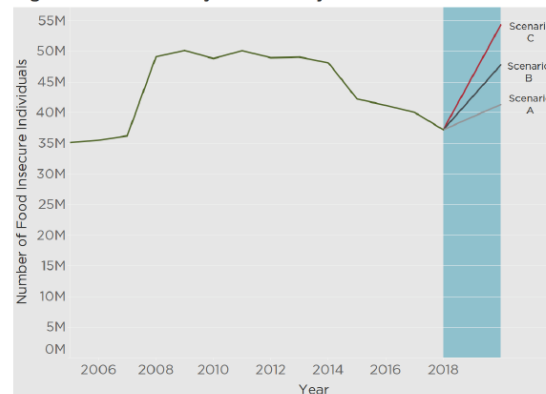
+62%

Table 1. Food Insecurity Projections by Scenario

	Scenarios		
	A	B	C
Unemployment rate increase (% pts)	1.1	4.5	7.6
Poverty rate increase (% pts)	1.5	2.6	4.0
Food insecurity rate increase (% pts)	1.3	3.3	5.3
Increase to number of food-insecure individuals	4.1 million	10.6 million	17.1 million

Source: Calculations by Dr. Craig Gundersen with data from the 2014 to 2018 Current Population Survey, December Supplement.

Figure 3. Food Insecurity Trends & Projections



The Senior Connection

- 📍 3950 Ferrara Dr, Wheaton-Glenmont, 20906
- 📞 301-962-0820
- 🌐 <http://seniorconnectionmc.org>
- ✉ susan.girard@seniorconnectionmc.org
- 🕒 10-4 Monday through Friday
- 📦 Volunteers will shop from a list using client's funds and bring the groceries to the client's door.

Type: Choice Pantry

Accessibility: Appointment Required, Service to a Specific Population

Features: Delivery

Glenmont United Methodist Church (Manna Partner)

- 📞 301-424-1130
- 🌐 <http://mannafood.org>
- 🕒 Tuesdays 4-7PM, Thursdays 2 - 5pm

Type: Pre-Packed Pantry Items

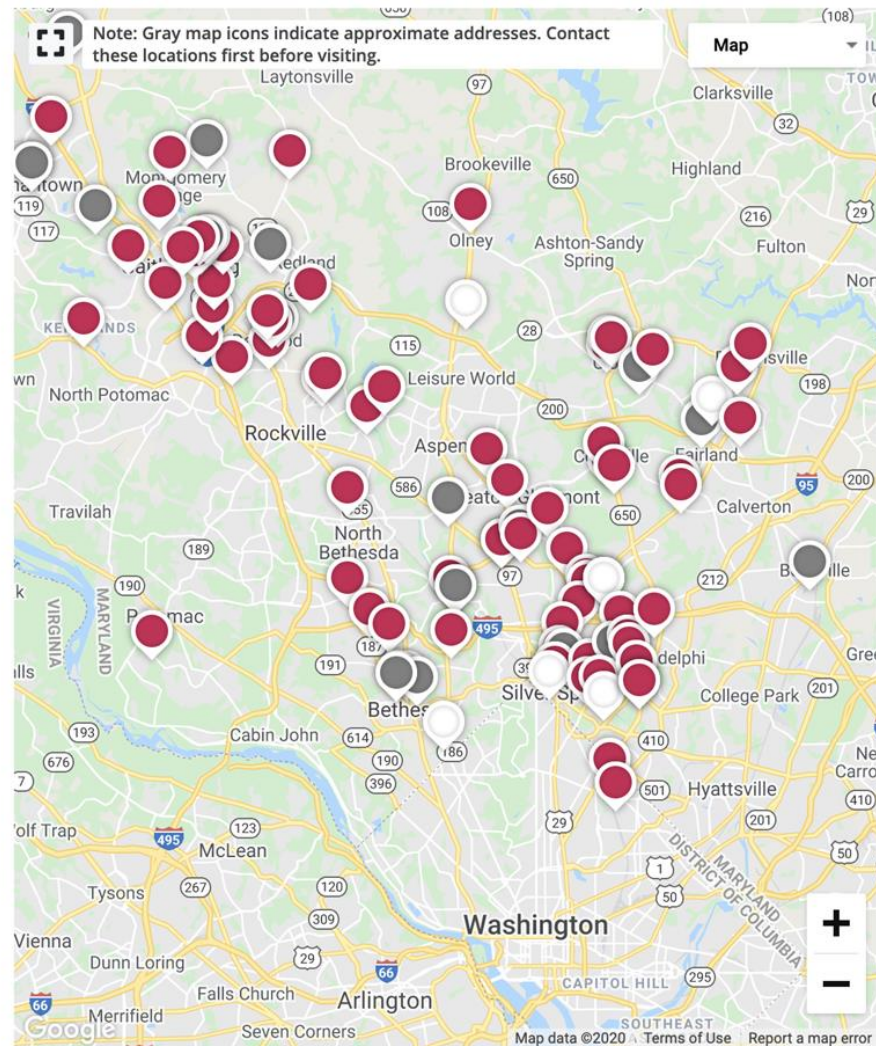
Accessibility: Appointment Required, Documentation Required

Languages: Spanish

Features: Special Diet Accommodations, Fresh Produce

Catholic Charities/Montgomery County Family Center

- 📍 12247 Georgia Ave., Silver Spring, 20902
- 📞 301-942-1790
- 🌐 <http://catholiccharitiesdc.org/catholiccharitiescenter/>



Food Security Task Force



Mission:

- Increase the volume of food in the food assistance system;
- Improve access to culturally appropriate and nutritious food by building the capacity of the food assistance network to store and strategically, safely, and efficiently distribute food to residents through home delivery and community pickup sites; and
- To communicate information to residents on available resources and ensure residents are connected with available resources.

The background features abstract, overlapping geometric shapes in various shades of green, ranging from light lime to dark forest green. These shapes are primarily located on the right side of the image, creating a modern, layered effect. The text is centered on the left side of this green area.

more food to
more people

more food

Prepared Meals

from local caterers and restaurants

Shelf-stable Foods & Pantry Items

from local suppliers, distributed by Manna and CAFB

Increased Fresh Food

from local farms and wholesalers

Victory Gardening & Community Farming

Provide resident access to yard and patio gardening supplies, space, and educational materials

to more people

Increased Benefits Access

expanding SNAP Outreach
expanding Farmers Market Double Dollars

Leveraging Technology to Efficiently Scale

Web intake → Screening for services → Food Delivery

Getting the Word Out

Posters & Bus Advertisements
Digital Messaging, Traditional Paid & Earned Media

Community-level Engagement & Coordination

Community Food Resource Navigators
Community Food Hubs

Grants



Food Access Grant



Capacity Building Grant



Community Gardens Grants



SNAP Outreach Grants

Operations

- Turning Strategy to Action
- Partnering with Food Providers
- USDA Farmers to Food Box Program
- Montgomery County Rice and Beans
- Emergency Food Staples Program
- Senior Food Program
- Logistics Support (ABS, DGS, Contract
- Expand training and safety support
- Partnership development
- HUB Support and Growth



Food Access Call Center

Do you need food during the COVID-19 emergency?

- ▶ montgomerycountymd.gov/covid19-food;
- ▶ Call 311 and ask for the Food Access Call Center;
- ▶ Online web form

Public Food
Info Text
Alert

*Text
MoCoFood*

to 888777

Public Private Partnerships



Food for Montgomery



*Leveraging Private
Funds*



\$5M goal



- ▶ Mark Hodge
- ▶ Mark.hodge@montgomerycountymd.gov
- ▶ Susan Kornacki
- ▶ susan@mocofoodcouncil.org
- ▶ Netta Squires
- ▶ netta.squires@montgomerycountymd.gov