

Prince George's County Council

FOOD SECURITY TASK FORCE

November 6, 2020



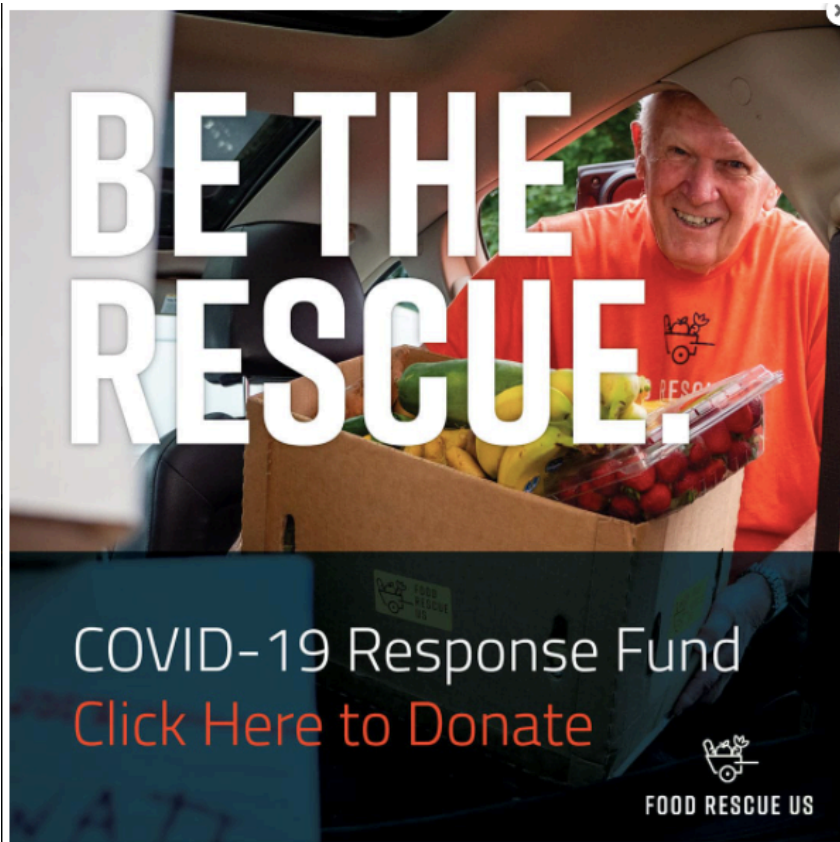
Task Force Preliminary Priorities

- ✓ **Food Assistance Provider Capacity**
 - Staffing, funding, cold storage
- ✓ **Food Retail Environment**
 - Affordability, accessibility, and availability of healthy foods
- ✓ **Federal Nutrition Assistance Benefit & Program Utilization**
 - FARMs and P-EBT, school meal utilization, SNAP participation
- ✓ **Locally Grown Food Production & Access**
 - Land and market access for growers and marketing support
- ✓ **Decentralized Food Assistance Network**
 - Provider concentration and service accessibility



PRINCE GEORGE'S COUNTY
FoodEquityCouncil

Department of Social Services & Food Equity Council



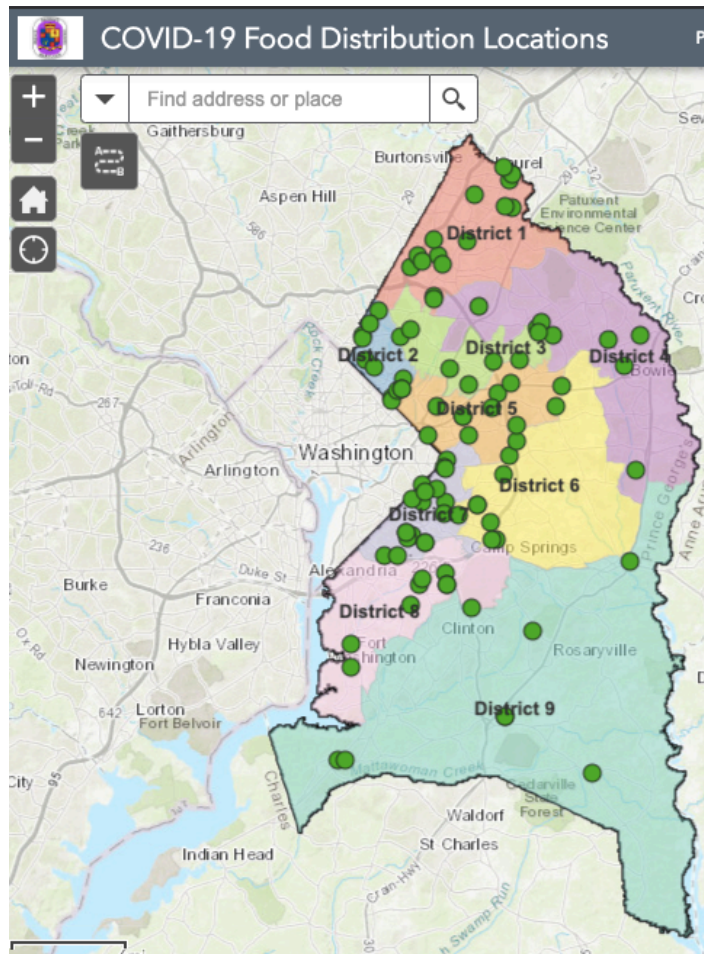
- ✓ **PGC Food Assistance Provider Call**
- ✓ **Bi-Weekly Zoom Calls: Every other Thursday from 1:00-2:30**

Metro Washington Council of Governments

- ✓ **Biweekly Metro DC Food Access & Security Call**
- ✓ **Every other Thursday, 4:00-5:00**



Ad-Hoc Multi-Stakeholder Call



- ✓ **Centralizing County Food Assistance Resources Call**
- ✓ **October 10th, 4-5pm**
 - Doodle will be sent for follow-up meeting



PRINCE GEORGE'S COUNTY
FoodEquityCouncil

Introduction to the data around food security

SETTING THE TABLE



Guest Speakers

✓ Capital Area Food Bank

- Roberto Melara, Director, MD Region

✓ Prince George's County Health Department

- Alison Mendoza-Walters, MPH, MBA, Health Planner

✓ No Kid Hungry Maryland

- Ayesha Holmes, MD Director
- Kara Panowitz, Senior Manager



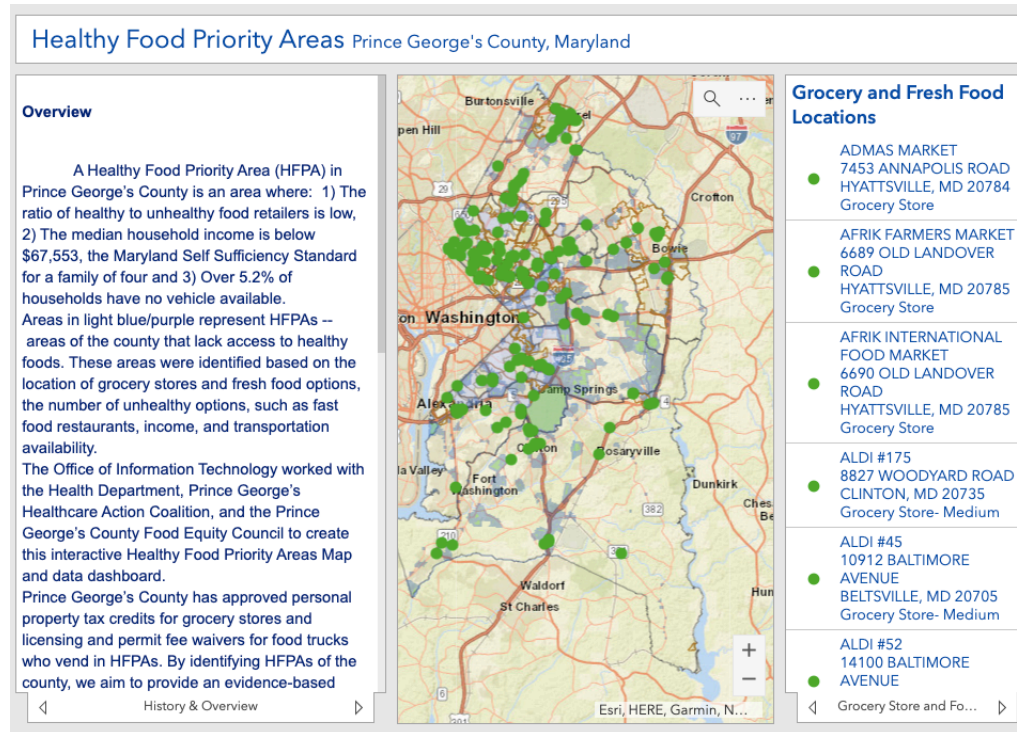
PRINCE GEORGE'S COUNTY
FoodEquityCouncil



2020 Hunger Report: Food Insecurity in Prince George's County

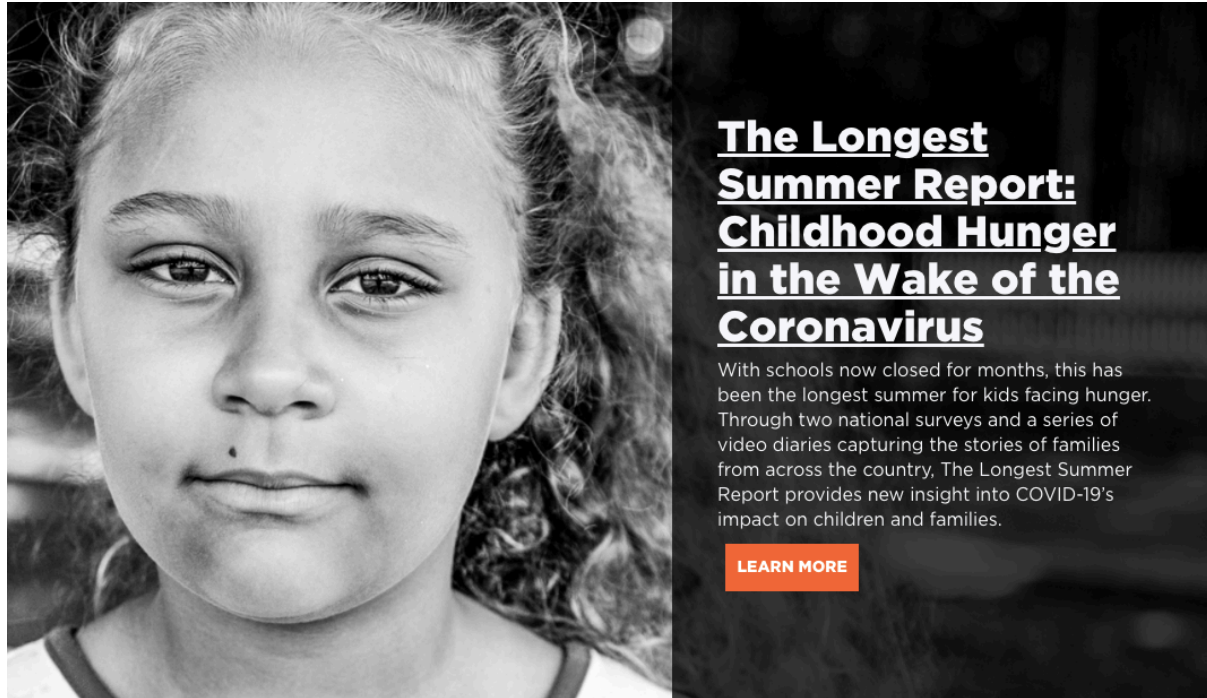
Roberto Melara, Director, MD Region
Capital Area Food Bank





Food Retail Environment: Healthy Food Priority Areas

Alison Mendoza-Walters, MPH, MBA, Health Planner
 Prince George's County Health Department



The Longest Summer Report: Childhood Hunger in the Wake of the Coronavirus

With schools now closed for months, this has been the longest summer for kids facing hunger. Through two national surveys and a series of video diaries capturing the stories of families from across the country, The Longest Summer Report provides new insight into COVID-19's impact on children and families.

[LEARN MORE](#)

Federal Nutrition Assistance & School Meals

Ayesha Holmes, MD Director & Kara Panowitz, Senior Manager
No Kid Hungry Maryland



PRINCE GEORGE'S COUNTY
FoodEquityCouncil

Open Discussion

- ✓ **Are our preliminary priorities supported by data?
Is anything missing?**
- ✓ **Preliminary Priorities:**
 - Food Assistance Provider Capacity
 - Food Retail Environment
 - Federal Nutrition Assistance Benefit & Program Utilization
 - Locally Grown Food Production & Access
 - Decentralized Food Assistance Network



PRINCE GEORGE'S COUNTY
FoodEquityCouncil

Homework

- ✓ **COVID-19 Food Security Interventions & Lessons Learned Survey**



PRINCE GEORGE'S COUNTY
FoodEquityCouncil

December Task Force Meeting

- ✓ **Friday, December 4, 1:00-2:30**
- ✓ **Speakers will focus on models, best practices, and lessons learned from the DC Metro Region**



PRINCE GEORGE'S COUNTY
FoodEquityCouncil